



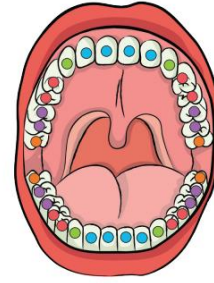
Knowing More Remembering More Learning More

## Animals Including Humans

**ARDLEIGH GREEN**  
JUNIOR SCHOOL

Year 4  
Science

# Types of Teeth



### Key

- incisors
- canines
- premolars
- molars
- wisdom

**Incisors** - We have **eight** incisors: four on the top jaw and four on the bottom. They are **flat** and are sometimes described as **spade** shape. These are the teeth we usually use first when eating. They are used for **biting** and **cutting** food.

**Canines** - We have **four** canines: two on the top jaw and two on the bottom. Our canines are **pointy** and sometimes referred to as '**fangs**'. We use our canines to **tear** and **rip** our food.

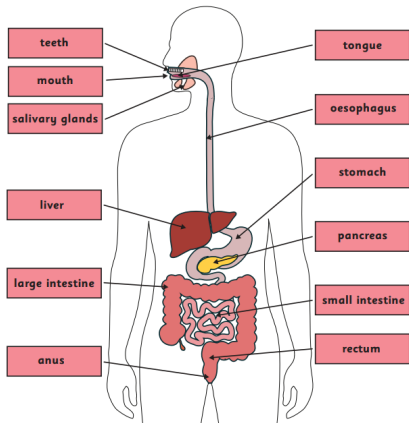
**Pre-molars** - We have **eight** premolars: four on the top jaw and four on the bottom. They are next to our canines. Our premolars are **small** and have a **flat** top. They **hold** and **crush** our food.

**Molars** - We have **eight** molars: four on the top jaw and four on the bottom. The molars towards the **back** of our mouths. They are our **largest** teeth and have a **flat** top. They are used to **grind** our food before we swallow it.

**Wisdom** - When we get older, most of us will grow our **wisdom** teeth. We have **four** wisdom teeth. Our wisdom teeth are just an **extra molar**, so they help with **grinding** our food. We **don't necessarily need our wisdom teeth** nowadays, and many people have them removed as our mouths aren't big enough to house them!

- Herbivores (e.g., horses) have little use for canines and mainly use incisors and molars
- Carnivores (e.g., Lion) mainly use canines and incisors, they don't have molars (they have premolars – small molars)
  - Omnivores (e.g., humans) use all three
- Tooth enamel is the hardest substance in the human body
- Humans have two sets of teeth; milk teeth and adult teeth

## The Digestive System



**The Digestion journey - starting at the mouth!**

**Mouth** - where food **enters** the digestive system

**Teeth** – **tear, rip** and **chew** food

**Salivary gland** – produces **saliva** to help **break down** food

**Tongue** – **moves** the food into a **bolus** and **pushes** it to the oesophagus

**Oesophagus** - a **muscular tube** which uses **contractions** to move the bolus from **mouth** to **stomach**

**Stomach** - Mix with **acid** and **enzymes** to turn food into a **paste**

**Liver** - produces **bile** to break down **fat**

**Pancreas** - produces **enzymes** which break down **fats, proteins** and **carbohydrates**

**Small intestine** - absorbs **nutrients** from the food

**Large intestine** - helps absorb **water** from the food

**Rectum** - **holds** the **stool** until you go to the toilet

**Anus** - where the **stool** is **released**

- Our stomach can stretch. An adult's stomach can hold approximately 1.5 litres of food and drink.
  - Our oesophagus is approximately 25cm long.
- It takes 7 seconds for food to travel to the stomach once you have swallowed it

## Key Vocabulary

**Digestive system:** series of **organs** that break down food

**Oesophagus:** **tube** running from **mouth** to **stomach**

**Saliva:** a **fluid** in the mouth which helps **break down** food

**Incisors:** front teeth for **cutting** food

**Canines:** **sharp** teeth for **tearing** food

**Molars:** **wide, flat** teeth for **grinding** food

**Enamel:** very hard **layer** covering the tooth

**Decay:** to **rot** away

**Cavity:** a **hole** in the tooth

**Fluoride:** ingredient in **toothpaste** that helps prevent **cavities** forming

**Consumer:** an animal which gets its **food** from other living things

**Predator:** an animal that gets its food from **killing** and eating other animals

## Test Yourself

- What are the different types of teeth and their functions?
- What is tooth decay and how do different liquids affect our teeth?
- What is the digestive system?
- What similarities and differences are there between human and animal digestive systems?
- What is a classification key?
- How can we use a classification key to sort animal dung?
- What is a food chain?